



Traction Motor Test Set

Model TM1800-72D

- Economical motor testing solution
- All controls and instrumentation contained in a single, industrial grade cabinet
- Full voltage regulation

TESTING APPLICATIONS

Designed to provide no-load test stand power for multi-horsepower DC Traction Motors

The Traction Motor Test Set features separate internal sources for field and armature testing and an AC source for testing winding reactance (Impedance Test.) The output supplies each have separate controls, measuring and protection circuits for efficient use of the test set.

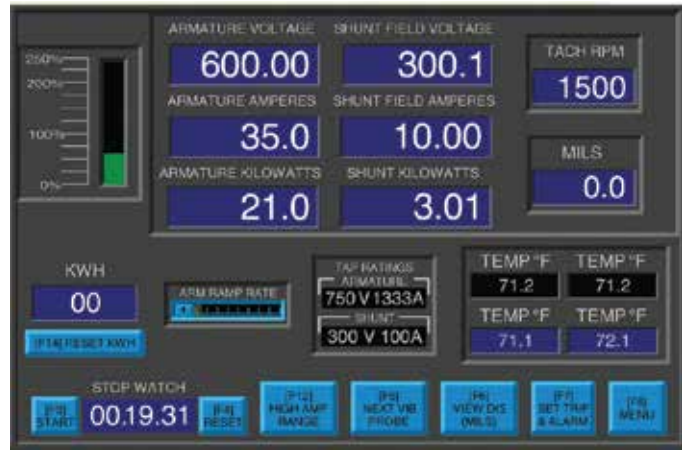
DESIGN and SAFETY FEATURES

- Main Power Breaker with indicator
- Control Power Breaker with indicator
- Security Circuit Interlock Open with indicator
- Emergency OFF Mushroom pushbutton switch
- Zero-start interlock
- External interlock provision
- External warning circuit provision
- Thermal overload protection on all voltage regulator outputs
- Filtered, forced air cooling
- Transient protection on all meters and relays
- Rugged steel cabinet with lifting eyes and removable side panels
- Angled control panel with writing desk
- Flashing red warning light
- Output cables included 15' (4.5 m)
- Recessed jacks for twist-lock plugs on output cables
- Two copies of operation/ maintenance manual



INSTRUMENTATION

The test system has a complete instrumentation package for definitive measurement of electrical and physical characteristics of motors under test. All meters for AC and DC supplies are digital and displayed on the Human Machine Interface. High accuracy current transformers (CT) and transducers are utilized for stability and a high degree of meter accuracy. All meters are calibrated with standards traceable to NIST/NRC and a calibration sticker is affixed to the control panel faceplate.



MODEL	TM1800-72D
INPUT	480 VAC, 160 A, 3 phase, 60 Hz (Other input voltages are available; consult factory)
OUTPUT	
Armature	0-1800 VDC, 40 ADC
Field	0-12 VDC, 2000 ADC
Impedance	0-50 VAC, 50 AAC
Ripple	<5%
Regulation	<10%
Accuracy	± 0.5% of range ± Least Significant Digit (LSD)
TACHOMETER	Non-contact pickup 0-9999 RPM, accuracy ±1 RPM
VIBRATION	4 position switch, 4 output jacks, 2 pickups with magnetic bases 0-10.00 mil (displacement)/0-0.3 in/sec (velocity) accuracy ± 1% of Range +LSD
TEMPERATURE	4 position switch, 4 output jacks, 2 thermocouples (Eor J) 0-200.0°C (32.0- 392.0°F), accuracy: ±1°C
DUTY CYCLE	Continuous at 100%
DIMENSIONS/WEIGHT (approx.)	100" L x 45" W x 77" H; 3,650 lbs. (2540 mm x 1143 mm x 1956 mm; 1656 kgs)

High Voltage • High Current • High Power Test Systems and Components

ISO 9001
CERTIFIED



www.phenixtech.com

World Headquarters
Phenix Technologies, Inc.
 75 Speicher Drive
 Accident, MD 21520 USA
Ph: +1.301.746.8118
Fx: +1.301.895.5570
Info@phenixtech.com

Branch Offices

Phenix Systems AG
 Riehenstrasse 62A, 4058 Basel, Switzerland
Ph: +41.61.383.2770 • Fx: +41.61.383.2771
Info@phenixsystems.com

Phenix Asia
 Zhong Cheng Rd, Sec 1, No 177, 2F, Taipei 11148 Taiwan
Ph: +886.2.2835.9738 • Fx: +886.2.2835.9879
Info@phenixasia.com

