



Water-Brake Dynamometer Test Stand

Model PTD-EMTS250

TESTING APPLICATIONS

Designed for load testing of small electric motors up to 250 HP

The Model PTD-EMTS250 is a self-contained unit offering exceptional electric motor load testing capabilities and features an adjustable lift table for easy motor placement. The test stand has 6 swivel-locking casters for easy positioning within a test area. A durable water absorber, automatic load control, and an integrated cooling system allow for continuous-duty testing of motors up to 250 HP.

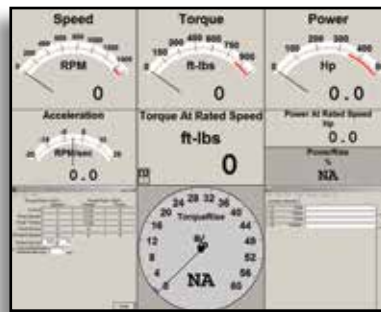
With the included DPM (Digital Power Meter), the system precisely measures and displays speed, torque, and power. With the DPM, load can be set to allow continuous testing at a constant torque. Torque is controlled by turning a potentiometer which controls the water flow into the absorber through the VFD (Variable Frequency Drive) pump. Measurements are taken directly from the absorber. The DPM also measures peak observed readings for all three measurements. The included Data Logger software, when installed on a computer, also displays torque, HP, RPM, and percent slip in real time and allows data to be graphed, recorded, stored, and printed.

Electric motor power and torque verification has never been easier.

- Compact and easy to set-up with an adjustable lift table
- Integrated 30-gallon (114 L) water storage tank
- Variable Frequency Drive pump for precise load control
- Advanced control unit with software provides speed, torque, and power data



INPUT: 208-240 V, 20 A, Single Phase, 50/60 Hz



TESTING CAPABILITIES

RPM	MIN HP	MAX HP	MIN FT-LB	MAX FT-LB
900	1	30	6	175
1200	2	75	12	328
1800	5	200	29	584
3600	10	250	28	365

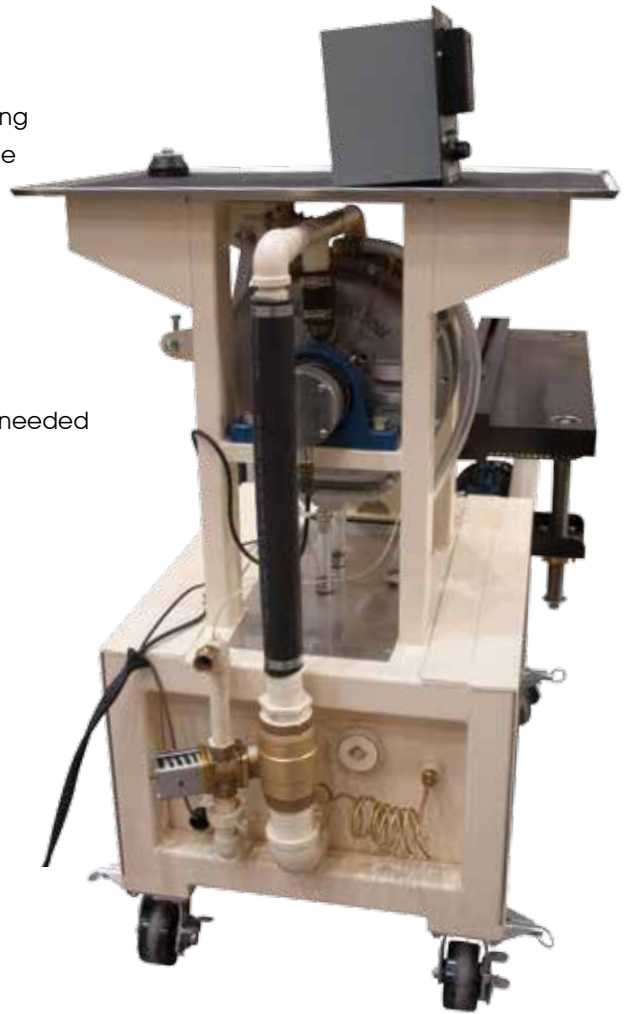


DESIGN FEATURES

- Variable Frequency Drive pump for precise dynamometer loading
- Adjustable lift table (manual) with 5"-14" (127-356 mm) centerline height adjustment for easy shaft alignment
- Maximum water consumption 10 GAL (38 L) per minute per 100 HP load
- Equal absorption in both CW and CCW directions
- Integrated water holding tank for water recirculation
- ¾" (19 mm) hose connection for fresh water intake, 2" (51 mm) drain pipe connection
- Internal temperature control valve determines when fresh water is needed
- Automatic load control with LED readout of Torque, RPM, HP
- Data Logger software and computer interface included
- Double U-joint drive shaft and shaft guard included
- Rugged steel frame with casters for mobility
- Two Shaft Adaptors
 - Type SK accepts 7/8"–2 1/8" (22-54 mm) shaft bushing
 - Type J accepts 2 3/8"–3 3/8" (60-86 mm) shaft bushing
- Two copies of operation/maintenance manual



Shaft Adaptors



DIMENSIONS & WEIGHT

83" (2108mm) L x 33" (838mm) W x 49" (1245mm) H;
1300 lbs (590 kgs)

SHIPPING SIZE

88" (2235mm) L x 44" (1118mm) W x 60" (1524mm) H;
1700 lbs (771 kgs)

OPTIONS

- Torque Calibration Weights, 8 and 30 lbs.
- Pedestal for controller

Other motor testing products PHENIX offers:

- High and Low Power Motor Test Systems
- Core Loss Testers
 - AC and DC Hipots
- Insulation Analyzers
 - Megohmmeters
- Microhmeters



Lift Table

High Voltage • High Current • High Power Test Systems and Components

ISO 9001
CERTIFIED



www.phenixtech.com

World Headquarters

Phenix Technologies, Inc.

75 Speicher Drive
Accident, MD 21520 USA

Ph: +1.301.746.8118

Fx: +1.301.895.5570

Info@phenixtech.com

Branch Offices

Phenix Systems AG

Riehenstrasse 62A, 4058 Basel, Switzerland
Ph: +41.61.383.2770 • Fx: +41.61.383.2771
Info@phenixsystems.com

Phenix Asia

Zhong Cheng Rd, Sec 1, No 177, 2F, Taipei 11148 Taiwan
Ph: +886.2.2835.9738 • Fx: +886.2.2835.9879
Info@phenixasia.com

