



■ TAG5000S – 4-230 kV ➔ Wireless phase comparator



▶ STANDARD

Complying to European Directives and CE marking

▶ USE

- Wireless phase comparator for three phase network with nominal voltages from 4 kV up to 230 kV – 50Hz or 60Hz (to be specified).
- Shall be used with two insulating sticks (not included) complying with the nominal voltage and having universal adaptors.

▶ ADVANTAGES

- Light and compact unit for overhead lines
- Safety probes for indoor use
- Positive indication for "in phase" conditions
- No hazard due to a cable link
- Increase distance of operation (more than 25m)
- Possibility of phasing through walls (inside outside)

▶ TECHNICAL SPECIFICATIONS

Transmitter : grey housing 210 mm – Ø 90 mm – 0.630 kg
Indicates the voltage presence with both visual and acoustic indications, then start to send the phase information to the receiver

Receiver : blue housing 210mm – Ø 90mm – 0.630 kg
Indicates the voltage presence, and indicates "in phase" relationship with both visual and acoustic indications

Built-in testing element simulating all the functions including out-of-phase conditions

HF radio transmission operating at 433.9 MHz

Minimum distance range in free air 25 m

In-door / Out-door and All weather use

Powered by two alkaline 9 V batteries (1 per module)

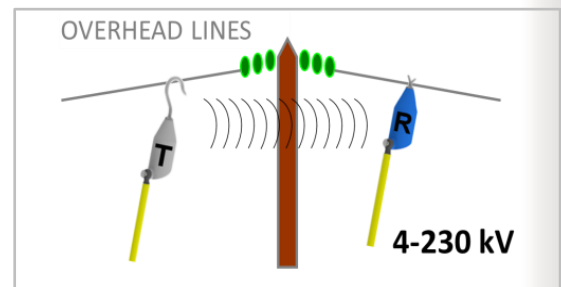
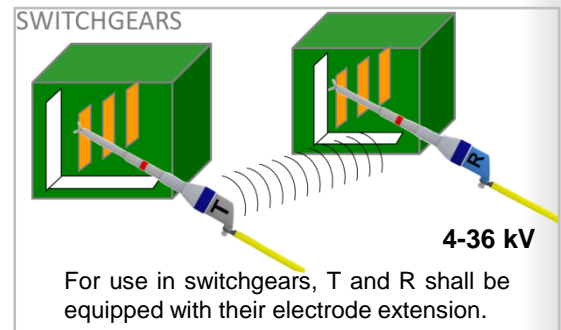
Safety MV electrode extensions (grey) for 4-36 kV indoor use :

Approx. weight of each electrode extensions : 0.600 kg

Insertion depth $A_i = 260$ mm

Extension length $L_u = 360$ mm

Soft case with a set of contact electrodes (hooks, straight and V-shaped) and a silicon cloth



Reference	Frequency	Dimensions / Weight
T5KSGB04230H5	50 Hz	755 mm x 205 mm x 140 mm / 4.400 kg
T5KSGB04230H6	60 Hz	